

# How to use your I-PORT™ Injection Port



*This is supplemental information to your User Guide found in the I-PORT™ box, sample kit, and on our website. Please read the User Guide for complete instructions. If you need additional assistance, please call 1-877-763-PORT (7678) to speak with a Customer Service Associate.*

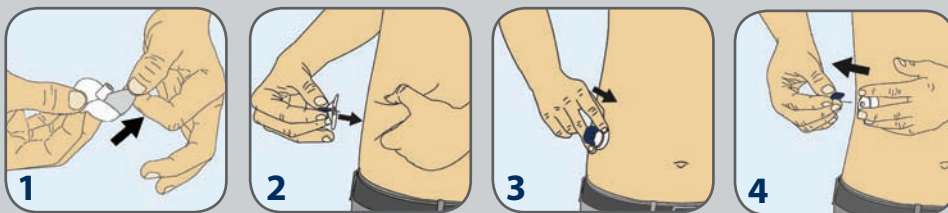
## Tips for Applying the I-PORT™ Injection Port

When using either application method below, remember the 4 F's – **Fatty Tissue**, **Fast**, **Force**, and **Follow Through**:

- Locate an area of application with adequate amounts of **Fatty Tissue**
- Apply the device **Fast**, with an adequate amount of speed and **Force**
- And **Follow Through** without a break in motion

It is recommended that you stand up in a relaxed position when applying the device.

### Primary method for applying the I-PORT™ Injection Port



For illustrative purposes only. Refer to the User Guide for complete instructions.

**Step 1** – Remove the backing from the adhesive pad and then remove the needle guard

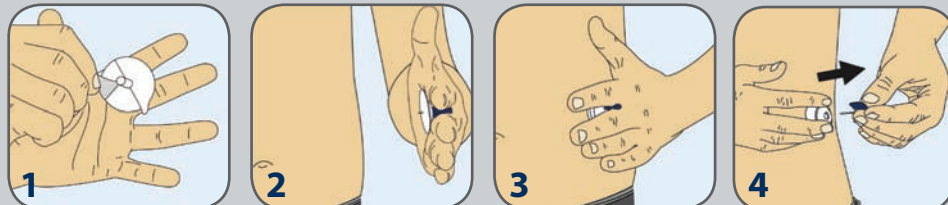
**Step 2** – Tightly pinch a large amount of skin and insert needle and cannula into the tissue using a fast, non-stop motion

**Step 3** – Press the I-PORT™ firmly against the skin to ensure the insertion needle and cannula are fully inserted into the tissue

**Step 4** – Hold the I-PORT™ firmly in place when removing the insertion needle

### Alternative method for applying the I-PORT™ Injection Port

If you are having difficulty applying the I-PORT™, or if your application technique is resulting in improper medication delivery, this method may work better for you.



For illustrative purposes only. Complete steps 1 - 3 in the User Guide when following the alternative method.

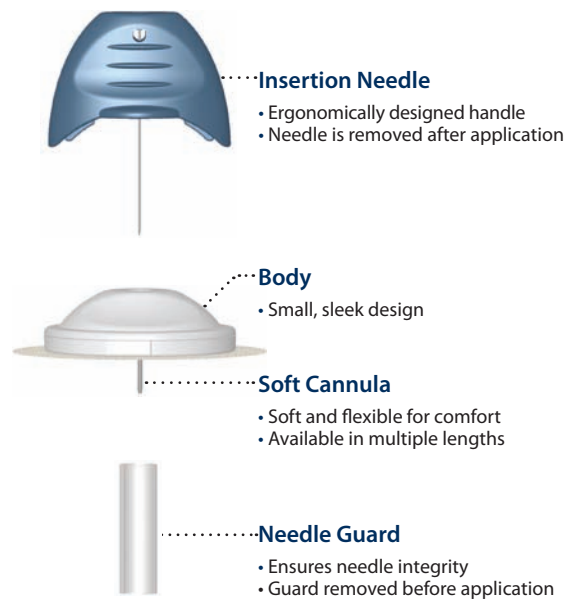
**Step 1** – Position and secure the I-PORT™ handle between the base of your index and middle fingers (confirm patch sits parallel to open palm), then remove the backing from the adhesive pad and remove the needle guard

**Step 2** – Position the I-PORT™ parallel to the application site

**Step 3** – Fully insert insertion needle and cannula into the tissue using a fast, non-stop motion slapping your open palm flatly against the application site

**Step 4** – Hold the I-PORT™ firmly in place when removing the insertion needle

## Exploded View



Notes: \_\_\_\_\_

\_\_\_\_\_

\_\_\_\_\_

\_\_\_\_\_

\_\_\_\_\_

\_\_\_\_\_

\_\_\_\_\_

\_\_\_\_\_

\_\_\_\_\_

\_\_\_\_\_

\_\_\_\_\_

\_\_\_\_\_

