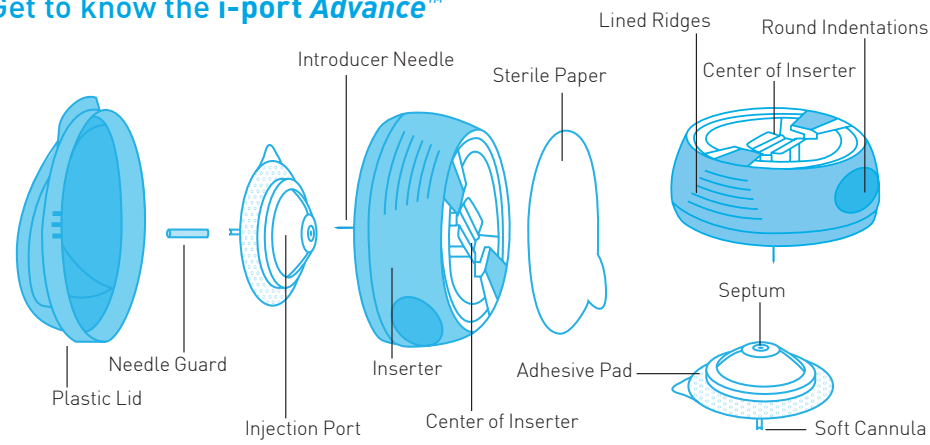


Get to know the **i-port Advance™**



Rx Only



CE 0123

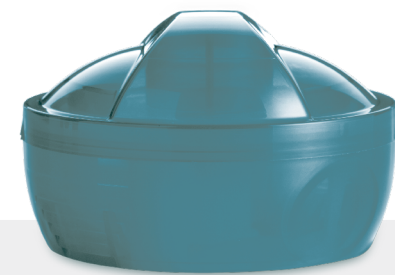
STERILE EO

REF 020110, 020102
020210, 020202

Unomedical A/S
4320 Lejre
Denmark
Made in Mexico

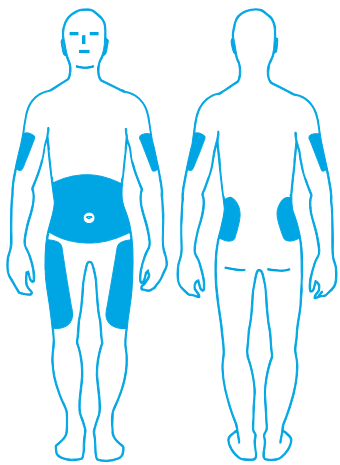
Distributed By:
Patton Medical Devices
Austin, TX 78705
USA

i-port
ADVANCE



User Guide

Where to apply

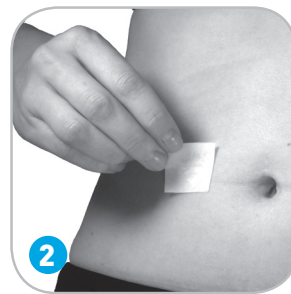


Application Sites

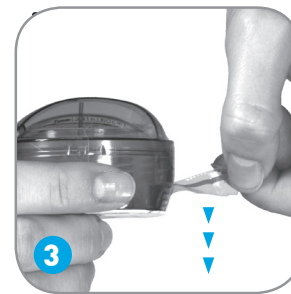
APPLY



1 Wash hands with soap and water



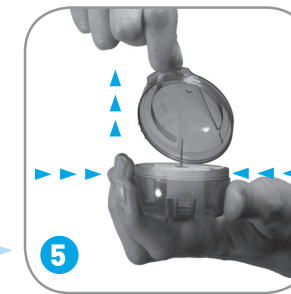
2 Swab skin with disinfectant



3 Pull red tab and remove seal



4 Remove sterile paper



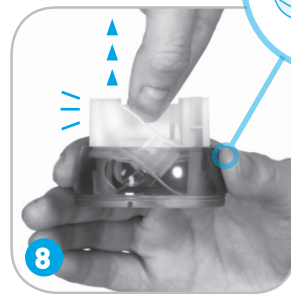
5 Securely hold inserter and remove plastic lid



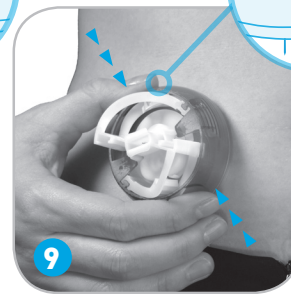
6 Remove protective backing from adhesive pad



7 Twist and remove needle guard from introducer needle



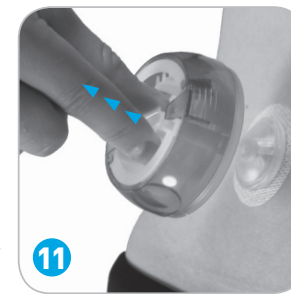
8 With introducer needle facing down, hold lined ridges on each side then pull up on center of inserter until "click"



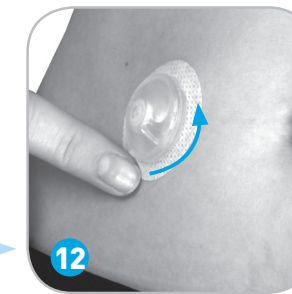
9 Hold inserter against skin and locate round indentations and then squeeze simultaneously



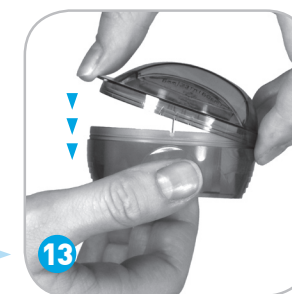
10 Press down on center of inserter to secure injection port to skin



11 Grab center of inserter and gently pull inserter to remove from injection port



12 Secure adhesive pad to skin



13 Replace plastic lid and dispose of according to local requirements

USE



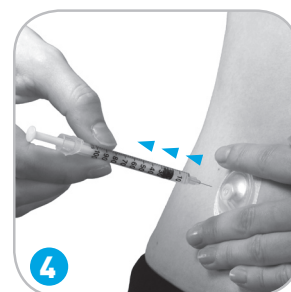
1 Clean septum before each use



2 Puncture septum using injection needle

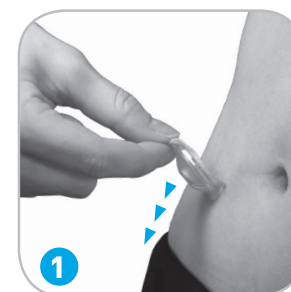


3 Slowly inject medication



4 Remove injection needle

REMOVE



1 Grab edge of adhesive pad and remove from skin



1 877 763 7678

www.i-port.com

Indications for Use

The **i-port Advance™** is indicated for both adults and children requiring daily subcutaneous injections.

Product Description

The **i-port Advance™** is a subcutaneous injection port, which combines the injection port with an aid for insertion. The injection port is an integrated part of the inserter. The **i-port Advance™** is delivered assembled and ready for use as a single, sterile unit.

Contraindications

- DO NOT use the same **i-port Advance™** for longer than 72 hours.
- DO NOT attempt to reapply the **i-port Advance™** after use.
- The **i-port Advance™** is neither intended nor indicated for use with blood or blood products.

Warnings and Precautions

- The **i-port Advance™** is only sterile and non-pyrogenic if the insertion device is unopened or undamaged. DO NOT use if the package is already open or is damaged, or if the protective backing has fallen off. Ensure the sterility by checking the sterile paper and tamper-proof seal.
- Carefully read through instructions prior to using the **i-port Advance™** as failure to follow instructions may result in pain or injury.
- Inserter can be disposed of safely after insertion if the lid has been placed back on. For available sharps containers, please consult your local pharmacy.
- If **i-port Advance™** is not securely placed in the inserter with the needle pointing straight ahead prior to insertion, pain or injury may occur.
- Be sure that the needle guard is removed before insertion.

- DO NOT use if introducer needle is bent or broken.
- DO NOT USE A NEEDLE LONGER THAN 5/16 in. or 8 mm (DO NOT attempt to use a 1/2 in. or 12 mm injection needle with the **i-port Advance™**. Doing so may damage the device causing unnecessary punctures of the skin, or tearing or puncturing of the soft cannula which may result in unpredictable medication delivery).
- DO NOT USE A NEEDLE SHORTER THAN 3/16 in. (5mm) when injecting into the **i-port Advance™**.
- The **i-port Advance™** is a single use device. Properly dispose of the used device and replace with a new device on a different location of the body as needed.
- Inaccurate medication delivery, infection, and/or site irritation may result from improper application to the body and/or maintenance of the **i-port Advance™** application site. If the application site becomes irritated or inflamed, remove and discard the device and apply a new device to a different location on the body.
- The device's soft cannula may crimp or bend when applying or while wearing. A crimped or bent cannula may limit or prevent medication delivery through **i-port Advance™**. You should remove and discard the device immediately if you suspect a crimped or bent cannula. Indications that your **i-port Advance™** has a crimped or bent cannula include:
 - Difficulty pressing down on the plunger of the syringe when injecting
 - Injected medication escaping from the device onto the top of the septum
 - Injected medication leaking onto the skin or saturating the adhesive pad
 - Moisture present within the clear body of the device
- DO NOT reinsert the introducer needle into the **i-port Advance™**. Reinsertion could cause puncturing or tearing of the soft cannula which would result in unpredictable medication delivery or injury.
- Replace the **i-port Advance™** if the adhesive tape becomes loose or is displaced from original site. Since the cannula is soft, it will not cause pain if it slips out, and this may therefore take place without notice. The soft cannula must always be completely inserted to receive full amount of medication from the injection.

- Swab skin with alcohol or similar disinfectant where you intend to apply the **i-port Advance™**. (Let skin surface dry completely prior to applying the device to the disinfected area.)
- Ensure the septum is clean before every use (use pure water).
- DO NOT put perfumes or deodorants on **i-port Advance™** as these may affect the integrity of the device.
- DO NOT inject into the **i-port Advance™** through clothing.
- Never point loaded inserter towards any body part where insertion is not desired.
- Store **i-port Advance™** at room temperature. DO NOT store or leave the device in direct sunlight.
- Avoid applying the **i-port Advance™** to sites that contain an excess amount of scar tissue or lipoatrophy.

Recommendations

- Test blood glucose per your healthcare provider's instructions to ensure that insulin delivery at the application site is appropriate.
- Test blood glucose 1 to 3 hours after introducing and using the **i-port Advance™** to ensure insulin delivery performs as anticipated, and measure your blood glucose on a regular basis.
- Avoid applying and using a new **i-port Advance™** prior to bedtime unless blood glucose can be checked 2 to 4 hours after injection.
- In the case of unexplainably high blood glucose, remove and discard the **i-port Advance™** and apply a new device to a different location on the body since the soft cannula could be dislodged, crimped or partially clogged. Should suggested actions not provide a resolution to the problem or should your blood glucose remain high, contact your physician or healthcare provider.



DO NOT REUSE

STERILE

STERILIZED USING ETHYLENE OXIDE

REF

CATALOG NUMBER



SEE INSTRUCTIONS



USE BY



MANUFACTURER

LOT

LOT NUMBER